

**PQ Labs**  
**Multi-Touch Screen G<sup>2</sup> Overlay**

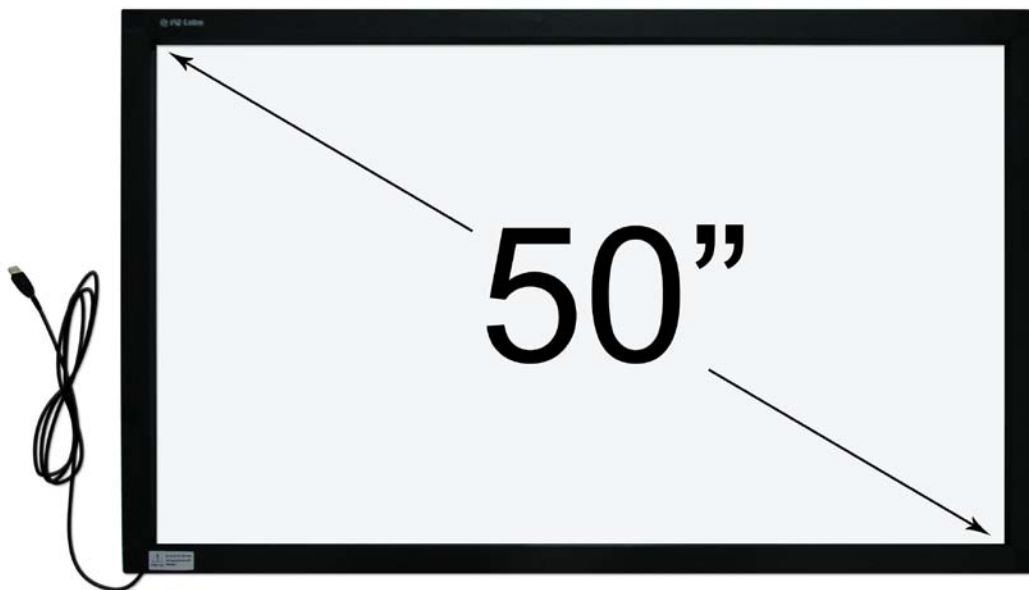
*User Manual 2.0*

50 inch PQ Labs Multi-Touch Overlay  
For 50 inch LCD/Plasma display

## Disclaimer

The information in this document is subject to change without notice. PQ Labs Inc. makes no representations or warranties with respect to the contents hereof, and specifically disclaims any implied warranties of merchantability or fitness for a particular purpose. PQ Labs Inc. reserves the right to revise this publication and to make changes from time to time in the content hereof without obligation of PQ Labs Inc. to notify any person of such revisions or changes.

## PQ Labs Multi-Touch Overlay Appearance



## PQ Labs Multi-Touch Overlay Specification

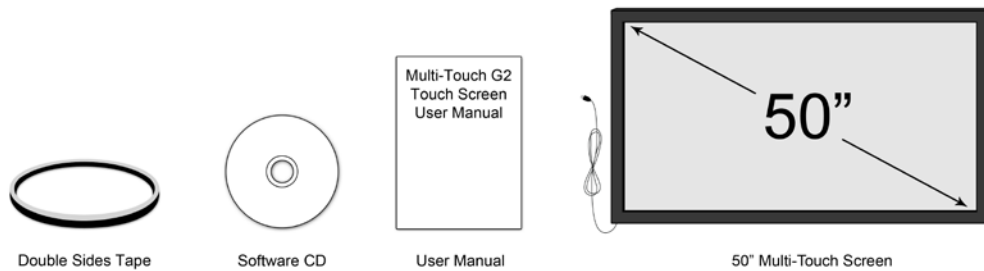
- Size: 50 inch
- Reliability: 50,000+ hours expected life-time
- Minimum Detectable Object Size: 3mm x 3mm (0.12 inch x 0.12 inch)
- Facing Material: Tempered glass
- Sampling Time/Response Time: <=14ms (72 fps)
- Working Temperature: 0 - 50°C (32 - 122 Fahrenheit)
- Working Environment: Indoor & Outdoor (No effect with Sunlight)
- Physical Dimensions: 693 mm x 1179 mm x 17 mm

### Other properties:

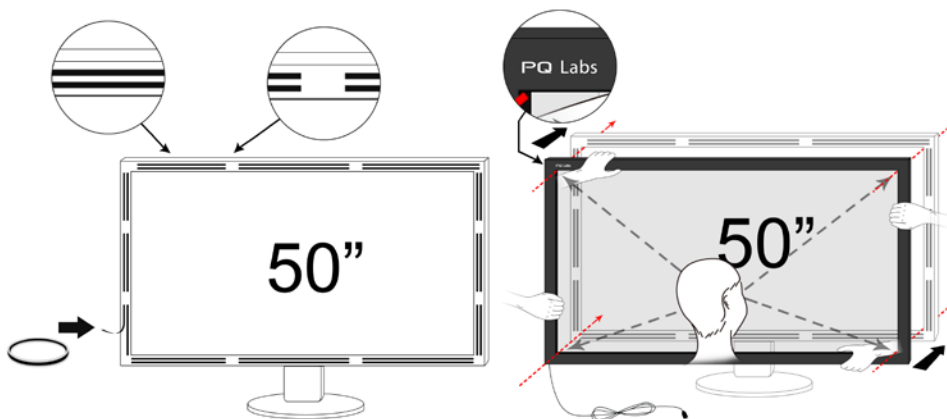
- Non-wear high-precision technology
- Fault-tolerant design
- Robust construction and scratch-resistant front glass

## Setup and Usage

1. The package includes PQ Labs Multi-Touch G2 Overlay, Double-sided Tape, User Manual, and a Software CD.



2. Clean the LCD/Plasma TV before putting Multi-Touch Overlay onto the top of 50 inch LCD/Plasma TV.
3. Fasten the Multi-Touch Overlay on the monitor using 3M double-sided tape (Two rows on each side and leave space at intervals for heat dissipation, as shown below). Make sure the PQ Labs logo is on the top left and Multi-Touch Overlay is aligned with the 32 inch LCD/Plasma display on all inner corners. Then put some pressure on the edges of overlay to increase the adhesion between overlay and display.



Note: Once fastened, it's hard to remove the multi-touch overlay. The only way to remove the overlay is to slide in and cut the tape along the side.

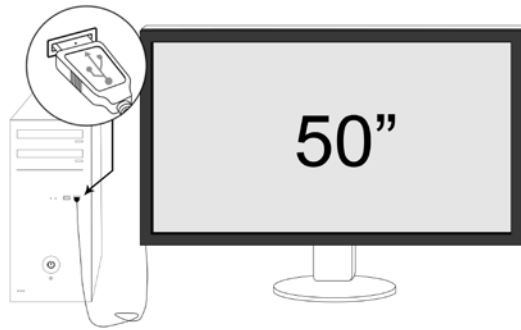


1. Install PQ Multi-Touch Server from CD-Rom.

Download available from <http://www.pqlabs.com/support.html>

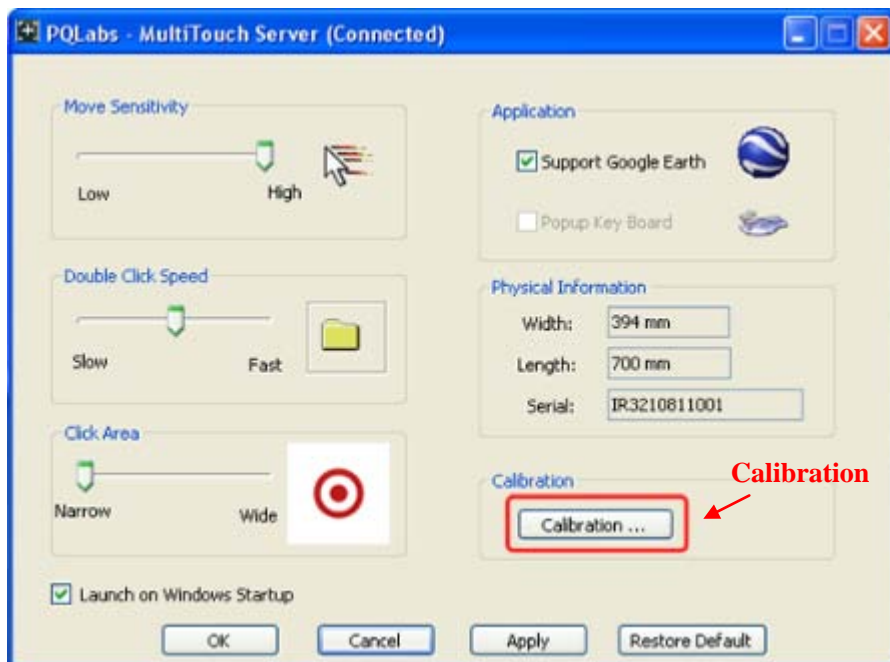
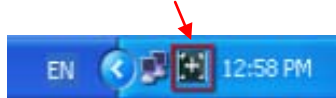


2. Connect the PQ Labs Multi-Touch Overlay USB cable to the PC installed with PQ Multi-Touch server.



3. Run calibration if needed. Double-click the server icon at the lower right of the 50 inch LCD/Plasma TV and calibration button is almost in the middle of the server menu.

**Double-Click the server icon**



4. Ready to operate with PQ Labs multi-touch functionality.

Web: <http://www.pqlabs.com>

Support: [contact@pqlabs.com](mailto:contact@pqlabs.com)

## FCC Compliance Statement



This device complies with Part 15 of the FCC Rules. Operation is subject to the following two conditions: (1) this device may not cause harmful interference, and (2) this device must accept any interference received, including interference that may cause undesired operation.

Federal Communication Commission Interference Statement:

NOTE: This equipment has been tested and found to comply with the limits for a Class B digital device, pursuant to Part 15 of the FCC Rules. These limits are designed to provide reasonable protection against harmful interference in a residential installation. This equipment generates, uses and can radiate radio frequency energy and, if not installed and used in accordance with the instructions, may cause harmful interference to radio communications. However, there is no guarantee that interference will not occur in a particular installation. If this equipment does cause harmful interference to radio or television reception, which can be determined by turning the equipment off and on, the user is encouraged to try to correct the interference by one of the following measures:

- Reorient or relocate the receiving antenna.
- Increase the separation between the equipment and receiver.
- Connect the equipment into an outlet on a circuit different from that to which the receiver is connected.
- Consult the dealer or an experienced radio/TV technician for help.

Changes or modifications not expressly approved by the party responsible for compliance could void the user's authority to operate the equipment.